



# GP1339

CLE A CHOCS 1/2

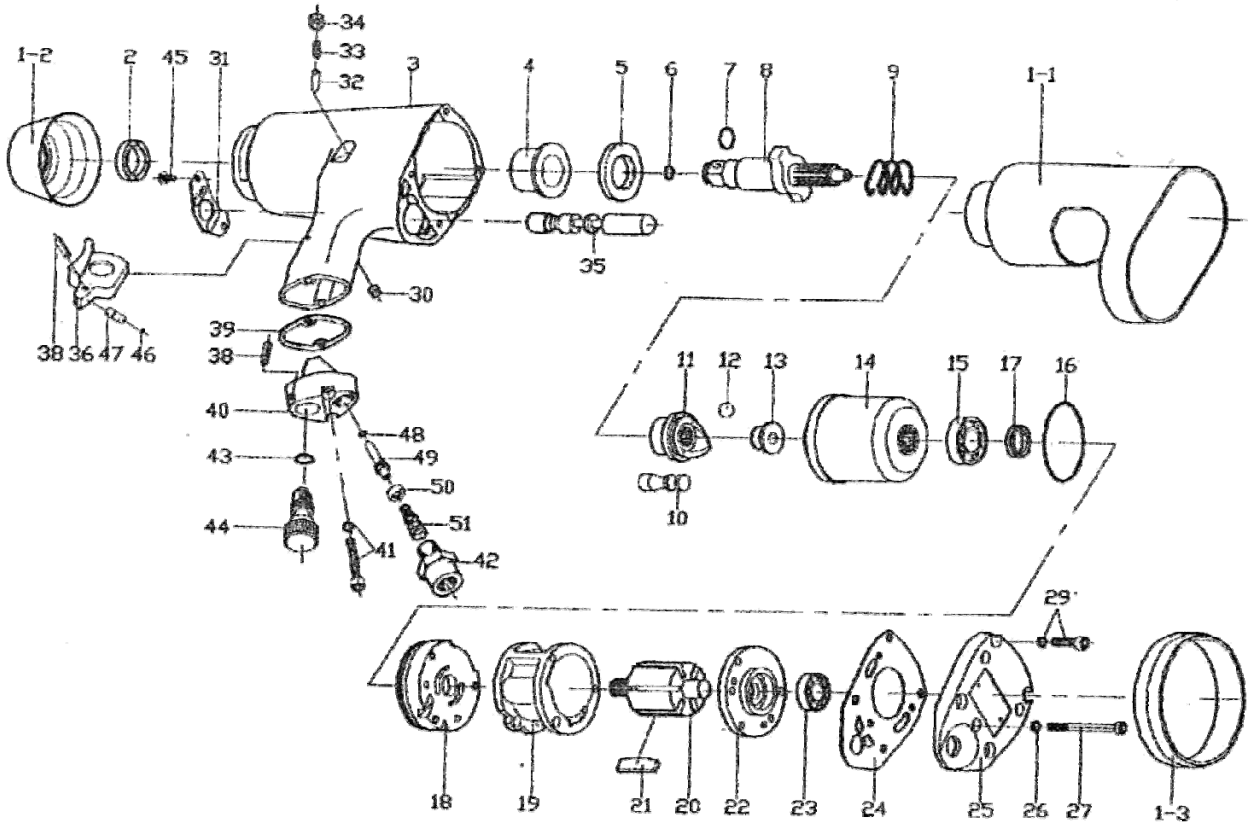
**MAE**

Manche Atlantique Equipements

**ZI LE PILAGA**

**22250 BROONS**

**Mail : infos@mae-fr.com**



INDEX No.	DESCRIPTION	QTE	INDEX No.	DESCRIPTION	QTE
GP1339-1-1	Protecting Rubber	1	GP1339-24	Rear Gasket	1
GP1339-1-2	Protecting Rubber	1	GP1339-25	Rear Cover	1
GP1339-1-3	Rubber	1	GP1339-26	Spring Washer	3
GP1339-2	Oil Seal	1	GP1339-27	Screw	3
GP1339-3	Motor Housing	1	GP1339-29	Screw	4
GP1339-4	Bushing	1	GP1339-30	Set Screw	1
GP1339-5	Washer	1	GP1339-31	Exhaust Deflector	1
GP1339-6	O-Ring	1	GP1339-32	Stop Pin	1
GP1339-7	Anvil Collar	1	GP1339-33	Spring Washer	1
GP1339-8	Anvil	1	GP1339-34	Set Screw	1
GP1339-9	Spring	1	GP1339-35	Reverse Valve	1
GP1339-10	Hammer Pin	2	GP1339-36	Trigger	1
GP1339-11	Hammer Cam	1	GP1339-38	Spring pin	2
GP1339-12	Ball	1	GP1339-39	Valve Block Gasket	1
GP1339-13	Spindle Guide	1	GP1339-40	Valve Block	1
GP1339-14	Hammer Cage	1	GP1339-41	Screw	2
GP1339-15	Ball Bearing	1	GP1339-42	Hose Adaptor	1
GP1339-16	O-Ring	1	GP1339-43	O-Ring	1
GP1339-17	Oil Seal	1	GP1339-44	Air Regulator	1
GP1339-18	Front End Plate	1	GP1339-45	Exh. Deflector Screw	2
GP1339-19	Cylinder	1	GP1339-46	O-Ring	1
GP1339-20	Rotor	1	GP1339-47	Valve stem	1
GP1339-21	Rotor Blade	6	GP1339-48	O-Ring	1
GP1339-22	Rear End Plate	1	GP1339-49	Valve stem	1
GP1339-23	Ball bearing	1	GP1339-50	Retainer	1
			GP1339-51	Spring	1