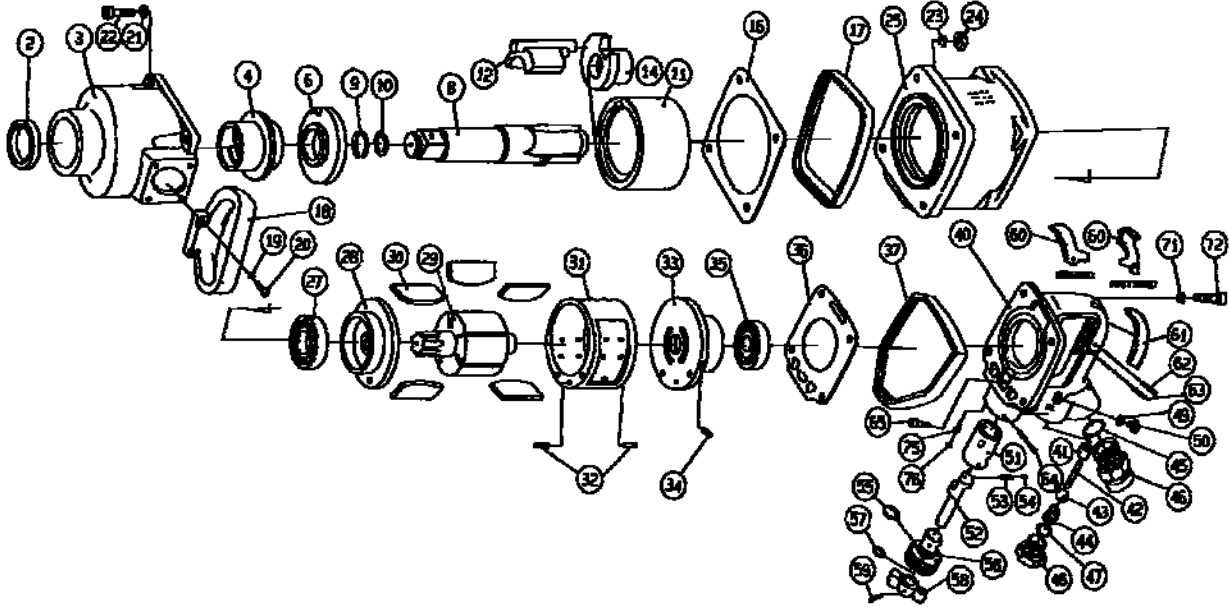




GP 1595 (L)
CLE A CHOCS 1"

MAE
 Manche Atlantique Equipements
ZI LE PILAGA
22250 BROONS
 Mail : infos@mae-fr.com



INDEX No.	DESCRIPTION	QTE	INDEX No.	DESCRIPTION	QTE
GP1595-2	Oil Seal	1	GP1595P-36	Motor Case Packing	1
GP1595 3A	Hammer Case Assembly (No.2~No.4)		GP1595-37	Rear Protect Rubber	1
GP1595-3	Hammer Case	1	GP1595-40AE	Outside Lever Frame Handle Assembly 40-60 62-76	
GP1595-4	Hammer Case Bushing	1	GP1595-40AI	Inside Lever Frame Handle Assembly 40-76	
GP1595-6	Side Plate	1	GP1595-40	Frame Handle	1
GP1595-8A	Anvil Assembly (No.8~No.10)	1	GP1595-41	Throttle Bushing	1
GP1595-8	Anvil (8")	1	GP1595-42	Throttle Pin	1
GP1595L 8A	2" Anvil Assembly (No.8~No.10)	1	GP1595-43	Throttle Valve	1
GP1595-8	2" Anvil (for 381S)	1	GP1595-44	Throttle Spring	1
GP1595-9	Retainer Ring	1	GP1595-45	O-Ring	1
GP1595-10	O-Ring	1	GP1595-46	Inlet Bushing	1
GP1595-11	Hammer Frame	1	GP1595-47	O-Ring	1
GP1595-12	Pin Hammer	1	GP1595-48	Throttle Plug	1
GP1595-14	Driver	1	GP1595-49	O-Ring	1
GP1595-16	Hammer Case Packing	1	GP1595-50	Oil Plug Screw	1
GP1595-17	Front Protect Rubber	1	GP1595-51	Valve Bushing	1
GP1595-18	D-Handle	1	GP1595-52	Reverse Valve	1
GP1595-19	Spring Washer (for D-Handle)	4	GP1595-53	Spring	1
GP1595-20	Hex.Cap Bolt (for D-Handle)	4	GP1595-54	Steel Ball	1
GP1595-21	Spring Washer	4	GP1595-55	O-Ring	1
GP1595-22	Hex.Cap Bolt	4	GP1595-56	Adjust Valve	1
GP1595-23	Spring Washer	4	GP1595-57	O-Ring	1
GP1595-24	Hex.Nut (for Motor Case)	1	GP1595-58	Reverse Lever	1
GP1595-25A	Motor Case Assembly(No.17, No.23~No.37)	1	GP159559	Spring Pin	1
GP1595-25	Motor Case	1	GP1595-60	Outside Lever	1
GP1595-27	Ball Bearing	1	GP1595-60I	Inside Lever	1
GP1595-28	Front End Plate	6	GP1595-61	Rubber (for Inside Lever)	1
GP1595-29	Rotor	1	GP1595-62	Spring Pin	1
GP1595-30	Vane	1	GP1595-63	Needle Pin	1
GP1595-31A	Cylinder Assembly (No.31, No.32)	2	GP1595-64	Spring Pin	1
GP1595-31	Cylinder		GP1595-65	Hex.Cap Bolt	1
GP1595-32	Spring Pin	1	GP1595-71	Spring Washer	4
GP1595-33A	Rear End Plate Assembly (No.33, No.34)	1	GP159572	Hex.Cap Bolt	4
GP1595-33	Rear End Plate	1	GP1595-75	Spring	1
GP1595-34	Spring Pin	1	GP1595-76	Steel Ball	1
GP1595-35	Ball Bearing	1			