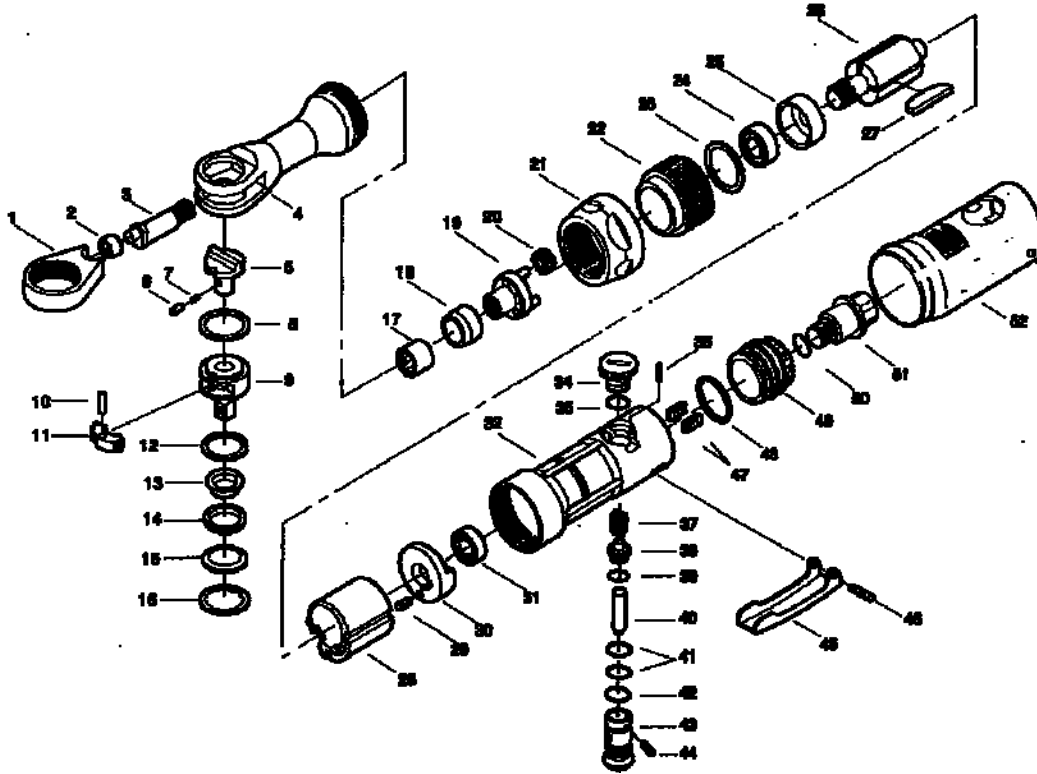




**GP 1912**  
**CLE A ROCHET 1/4**

**MAE**  
Manche Atlantique Equipements  
**ZI LE PILAGA**  
**22250 BROONS**  
Mail : [infos@mae-fr.com](mailto:infos@mae-fr.com)



ARTS No.	DESIGNATION	QTE	PARTS No.	DESIGNATION	QTE
GP1912-01	Ratchet Yoke	1	GP1912-27	Rotor Blade	4
GP1912-02	Drive Bushing	1	GP1912-28	Cylinder	1
GP1912-03	Crank shaft	1	GP1912-29	Spring Pin	1
GP1912-04	Ratchet Housing	1	GP1912-30	Rear End Plate	1
GP1912-05	Reverse Button	1	GP1912-31	Ball Bearing	1
GP1912-06	Lock Pin	1	GP1912-32	Motor Housing	1
GP1912-07	Ratchet Spring	1	GP1912-34	Regulator Dial	1
GP1912-08	Wear Washer	1	GP1912-35	O-Ring	1
GP1912-09	Ratchet Anvil (3/8")	1	GP1912-36	Spring Pin	1
GP1912-10	Dowel Pin	1	GP1912-37	Valve Spring	1
GP1912-11	Ratchet Pawl	1	GP1912-38	Valve	1
GP1912-12	Washer A	1	GP1912-39	O-Ring	1
GP1912-14	Washer B	1	GP1912-40	Valve Shaft	1
GP1912-15	Spring Washer	1	GP1912-41	O-Ring	2
GP1912-16	Retaining Ring	1	GP1912-42	O-Ring	1
GP1912-17	Needle Bearing	1	GP1912-43	Air Regulator	1
GP1912-18	Spindle Bushing	1	GP1912-44	Spring Pin	1
GP1912-19	Planet Cage with Pin	1	GP1912-45	Throttle Lever	1
GP1912-20	Idle Gear	3	GP1912-46	Spring Pin	1
GP1912-21	Coupling Nut	1	GP1912-47	Sponge	2
GP1912-22	Internal Gear	1	GP1912-48	O-Ring	2
GP1912-23	Lock Washer	1	GP1912-49	Exhaust Sleeve	1
GP1912-24	Ball Bearing	1	GP1912-50	O-Ring	1
GP1912-25	Front End Plate	1	GP1912-51	Swivel Inlet Bushing	1
GP1912-26	Rotor	1	GP1912-52	Housing Cover	1