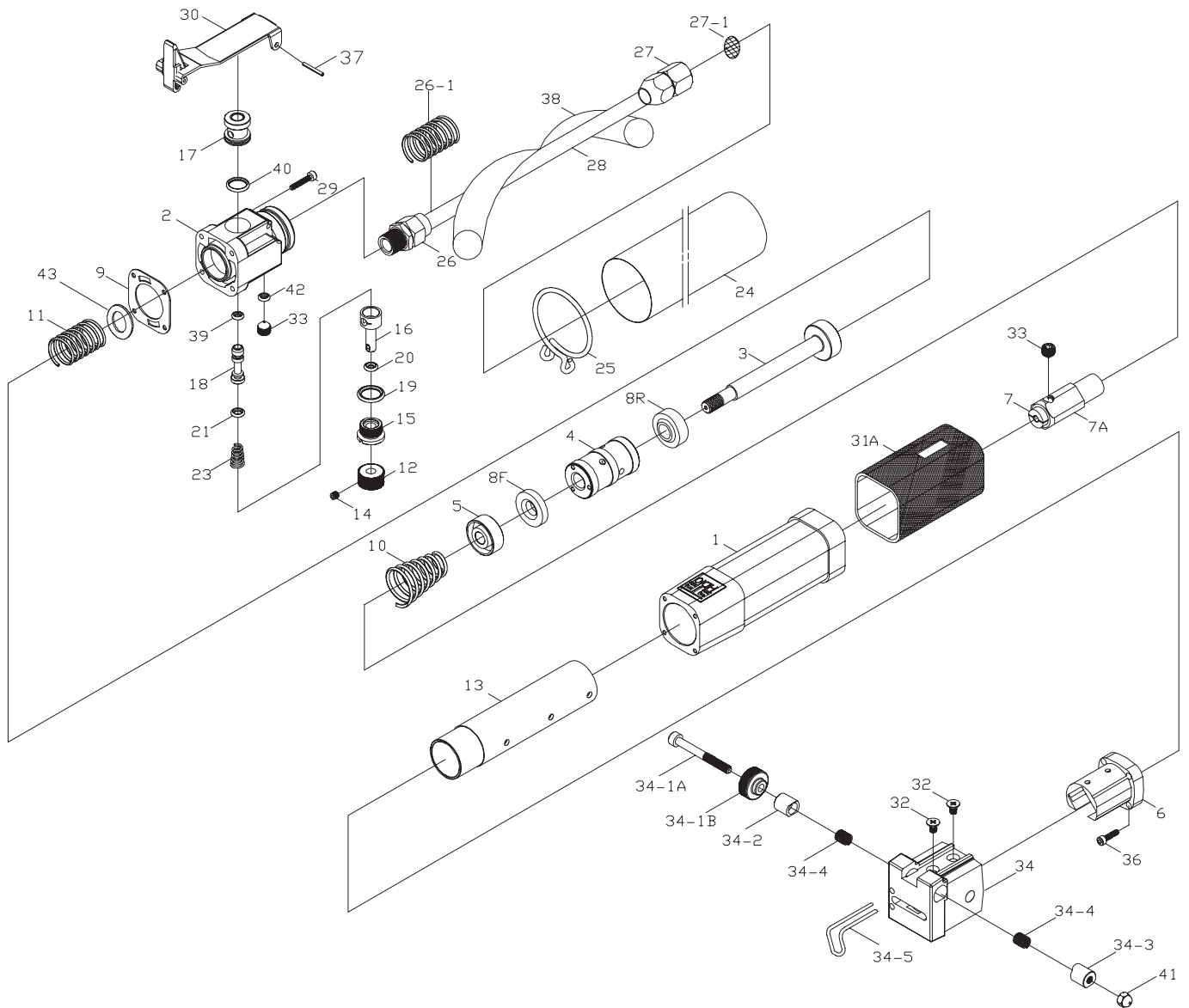


BTB WKHD10 RECIPROCATING AIR POWER TOOL



Part #	Description	Qty.
B1	Main Body	1
B2	Regulator Valve Cap (Body Only)	1
B3	Piston Rod	1
B4	Piston	1
B5	Collar	1
B6	Guide Head	1
B7	Chuck Holder	1
B7A	Chuck Insert	1
B8F	Urethane Spacer, Front	1
B8R	Urethane Spacer, Rear	1
B9	Gasket	1
B10	Front Spring	1
B11	Rear Spring	1
B12	Valve Knob	1
B13	Sleeve	1
B14	Set Screw	1
B15	Regulator Cap	1
B16	Regulator	1
B17	Valve Bush	1
B18	Valve	1
B19	O-Ring	1
B20	O-Ring	1
B21	O-Ring	1
B22	N/A	-
B23	Spring	1
B24	Muffer Sleeve	1
B25	Muffer Sleeve Clip	1

Part #	Description	Qty.
B26	Hose Nipple Front	1
B26-1	Hose Spring	1
B27	Hose Nipple Rear	1
B27-1	Filter	1
B28	Air Hose	1
B29	Screw Rear	4
B30	Lever	1
B31A	Body Cover	1
B32	Cap Screw	2
B33	Cone Set Screw (Blade Chuck & Oil Hole)	1
B33F	Flat Set Screw (for Air Saw Blades)	1
B34	Controller Cap	1
B34-1A	Clamp Screw	1
B34-1B	Knob	1
B34-2	Plain Jaw	1
B34-3	Threaded Jaw	1
B34-4	Spring	2
B34-5	Air Saw Guide	1
B35	N/A	-
B36	Front Screw	4
B37	Lever Pivot Pin	1
B38	Foam Muffer	1
B39	O-Ring	1
B40	O-Ring	1
B41	Lock Nut	1
B42	O-Ring	1
B43	Washer	1