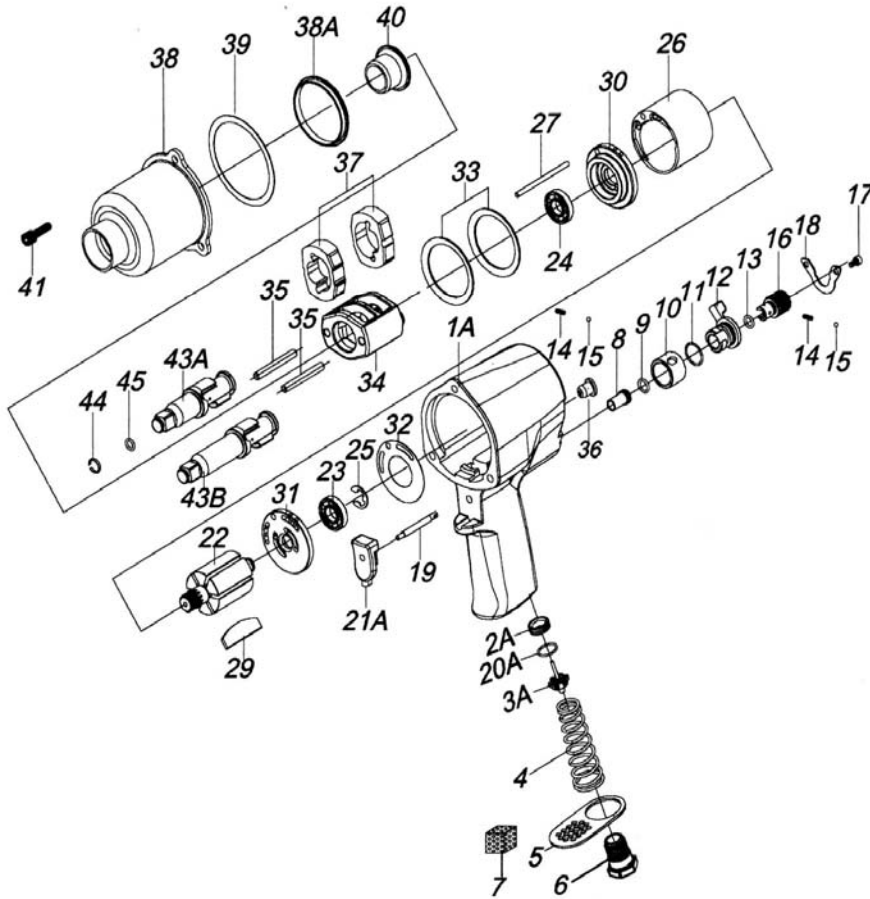




GP 1345
CLE A CHOCS 1/2

MAE
Manche Atlantique Equipments
ZI LE PILAGA
22250 BROONS
Mail : infos@mae-fr.com



INDEX NO.	DESCRIPTION	REQ'D NO.	INDEX NO.	DESCRIPTION	REQ'D NO.
GP1345-01A	Motor Housing Assembly	1	GP1345-25	Rear Rotor Bearing Retainer	1
GP1345-02A	Throttle Valve Seat	1	GP1345-26	Cylinder	1
GP1345-03A	Throttle Valve Assembly	1	GP1345-27	Cylinder Dowel	1
GP1345-04	Throttle Valve Spring	1	GP1345-29	Rotor Blade	6
GP1345-05	Exhaust Deflector	1	GP1345-30	Front End Plate	1
GP1345-06	Air Strainer	1	GP1345-31	Rear End Plate	1
GP1345-07	Muffler Element	1	GP1345-32	End Plate Gasket	1
GP1345-08	Air Valve	1	GP1345-33	Motor Clamp Washer	2
GP1345-09	O-ring	1	GP1345-34	Hammer Frame	1
GP1345-10	Reverse Valve Bushing	1	GP1345-35	Hammer Pin	2
GP1345-11	O-ring	1	GP1345-36	Grease Fitting	1
GP1345-12	Revers Valve	1	GP1345-37	Hammer	2
GP1345-13	O-ring	1	GP1345-38	Hammer Case	1
GP1345-14	Steel Ball Spring	2	GP1345-38A	Hammer Case Pilot	1
GP1345-15	Steel Ball	2	GP1345-39	Hammer Case Gasket	1
GP1345-16	Air Regulator	1	GP1345-40	Hammer Case Bushing	1
GP1345-17	Screw	2	GP1345-41	Hammer Case Cap Screw	3
GP1345-18	Retainer	1	GP1345-43A	Standard Anvil	1
GP1345-19	Valve Pin	1	GP1345-43B	2" Extended Anvil	1
GP1345-20A	O-ring	1	GP1345-44	Socket Retainer	1
GP1345-21A	Trigger	1	GP1345-45	Retainer O-ring	1
GP1345-22	Rotor	1	GP1345-TK	Tune-Up Kit INC.9,11,13,20A,32,39,44,45	
GP1345-23	Rear Rotor Bearing	1			
GP1345-24	Front Rotor Bearing	1			