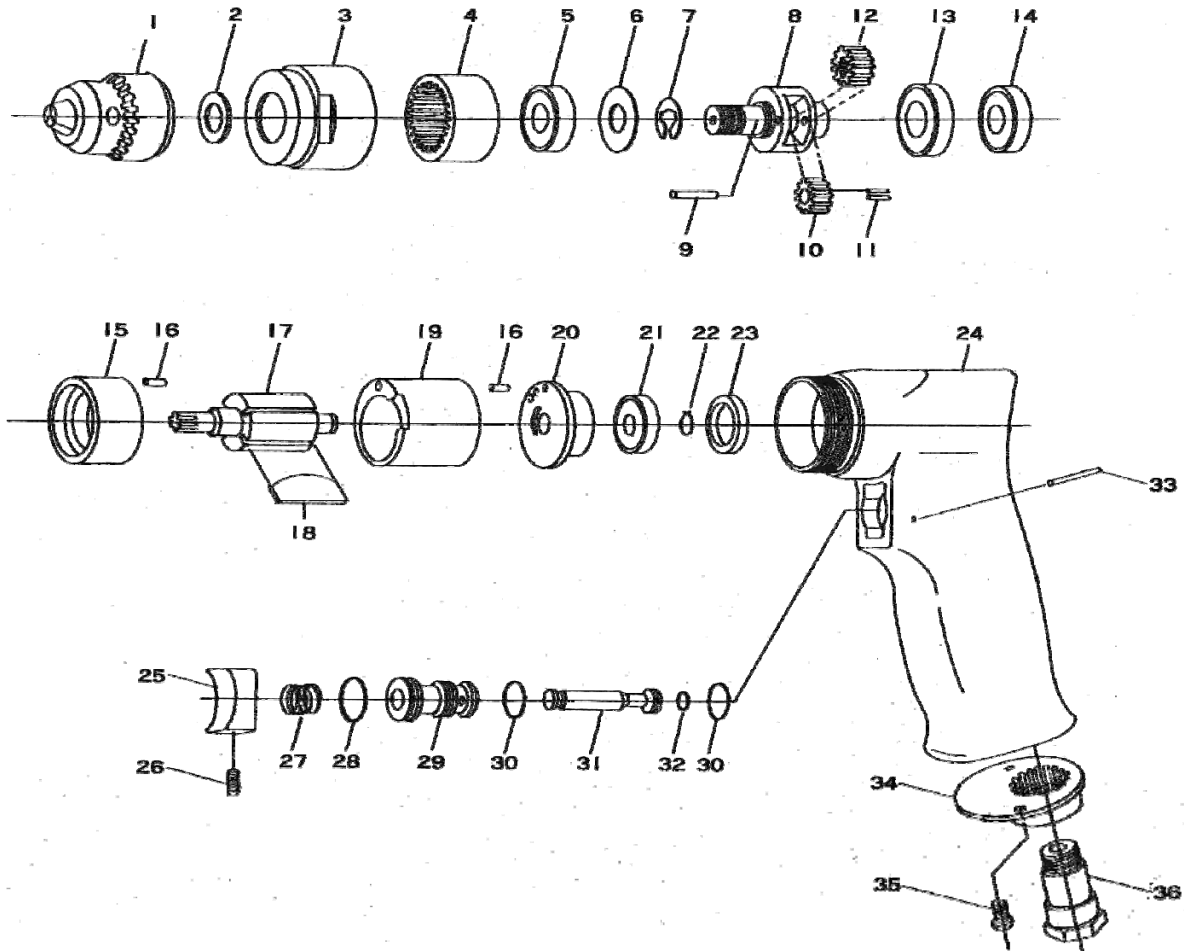




GP2100
PERCEUSE 10MM

MAE
 Manche Atlantique Equipements
ZI LE PILAGA
22250 BROONS
 Mail : infos@mae-fr.com



INDEX No.	DESCRIPTION	QTE	INDEX No.	DESCRIPTION	QTE
GP2100-1	Mandrin	1	GP2100-19	Cylindre	1
GP2100-2	Rondelle	1	GP2100-20	Flasque arr	1
GP2100-3	Carter	1	GP2100-21	Roulement 626	1
GP2100-4	Couronne	1	GP2100-22	Clips	1
GP2100-5	Roulement EE3	1	GP2100-23	Cache roulement	1
GP2100-6	Rondelle	1	GP2100-24	Corps	1
GP2100-7	clips	1	GP2100-25	Gâchette	1
GP2100-8	Porte satellite	1	GP2100-26	Vis	1
GP2100-9	Axe	2	GP2100-27	Ressort	1
GP2100-10	Satellite	2	GP2100-28	Joint	1
GP2100-11	Aiguille	22	GP2100-29	Chemise	1
GP2100-12	Pignon	1	GP2100-30	Joint	2
GP2100-13	Roulement 6001	1	GP2100-31	Axe gâchette	1
GP2100-14	Roulement 608	1	GP2100-32	Joint	1
GP2100-15	Flasque avt	1	GP2100-33	Goupille	1
GP2100-16	Goupille	2	GP2100-34	Silencieux	1
GP2100-17	Rotor	1	GP2100-35	Vis	2
GP2100-18	palette	4	GP2100-36	raccord	1