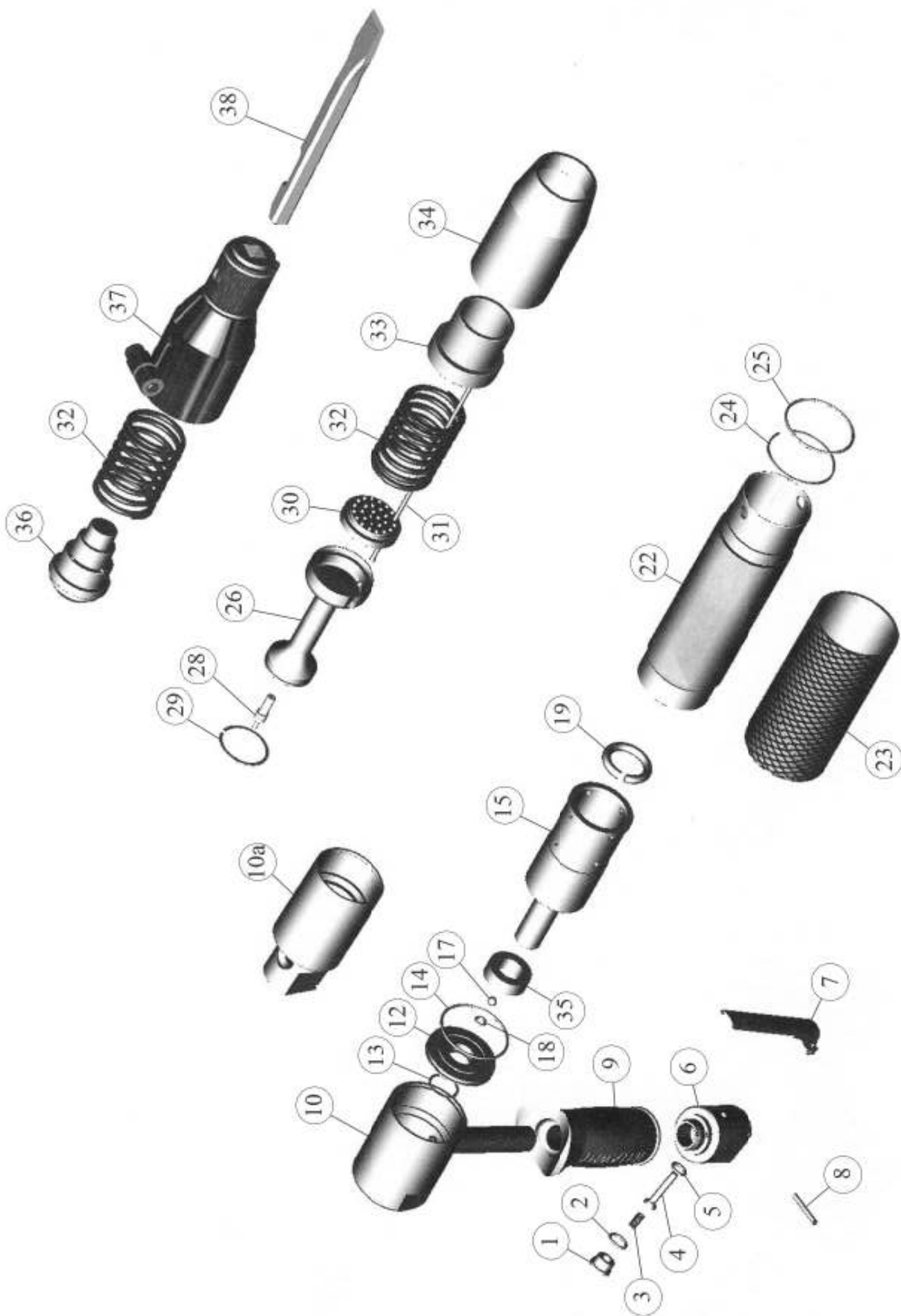


# EXPLODED VIEW

# EXPLODED VIEW



# PARTS LIST

ITEM No.	PART No.	DESCRIPTION	ITEM No.	PART No.	DESCRIPTION
<b>Common Parts</b>			<b>Common Parts</b>		
1	615.3021	Valve Cap	28	636.3003	Valve Pin
2	809.0139	Valve Cap O'Ring	38	704.3101	Chisel 1/2" Sq Shank 7" x 3/4" Blade
3	712.3022	Valve Spring		704.3103	Chisel 1/2" Sq Shank 7" x 2 1/2" Blade
4	618.3022	Valve Stem		704.3205	Chisel 1/2" Sq Shank 7" x 1 3/8" Blade
5	809.0089	Valve Seat O'Ring		704.3110	Chisel 1/2" Sq Shank Spark Resistant 2" Blade
6	616.3021	Valve Body		705.1102	Chisel 5/8" Hex Shank 8" x 4" Blade
	423.3021	Valve Body Assembly (includes items 1-8)		705.1106	Chisel 5/8" Hex Shank 9" x 2" Blade
7	716.3000	Throttle Lever		705.1112	Chisel 5/8" Hex Shank Spark Resistant 4" Blade
8	813.0108	Roll Pin		708.1100	Comb Holder 5/8" Hex Shank (for 1 1/2" Comb)
9	717.3050	Rubber Handle Grip		431.3504	Scraper 5/8" Hex Shank c/w 4" Blade
17	816.3003	Ball 6mm diameter (Polyurethane)			
18	809.0080	Ball Retaining O'Ring		819.2375	Connector 1/4" BSP-3/8" Stem
<b>VL203/223 Components</b>			<b>VL303 Components</b>		
10	425.2003	VL203 Cover Assembly (Pistol Grip)	10	425.3003	Cover Assembly (Pistol Grip)
10a	616.2003	VL223 Cover Assembly (Inline)	12	652.3003	Guide Plate
12	652.2003	Guide Plate	13	829.3003	Guide Plate Seal
13	829.2003	Guide Plate Seal	14	809.0299	Guide Plate O'Ring
14	809.0299	Guide Plate O'Ring	15	428.3003	Cylinder
15	428.2003	Cylinder	19	809.3004	Piston Cushion
19	809.2004	Piston Cushion	22	622.3031	Intermediate Tube
22	622.2031	Intermediate Tube	23	721.3003	Intermediate Tube Outer Sleeve
23	721.2003	Intermediate Tube Outer Sleeve	24	814.3003	Circlip VL303 only
25	809.0299	Front Tube Locking O'Ring	25	809.0299	Front Tube Locking O'Ring
26	612.2003	Piston	26	612.3003	Piston
29	829.2002	Piston Ring	29	829.3002	Piston Ring
30	601.2030	3mm Needle Holder (fitted as standard)	30	601.3030	3mm Needle Holder (fitted as standard)
	601.2020	2mm Needle Holder		601.3020	2mm Needle Holder
31	413.2119	Needle 3mm Chisel set (fitted as standard)		601.3040	4mm Needle Holder
	412.1151	Needle 2mm Flat set	31	413.2128	Needle 3mm Chisel set (fitted as standard)
	413.1119	Needle 3mm Flat set		412.1165	Needle 2mm Flat set
	413.3119	Needle 3mm Pointed set		413.1128	Needle 3mm Flat set
	403.1309	Needle set (1 x set Beryllium Copper)		413.3128	Needle 3mm Pointed set
32	712.2003	Front Spring		403.1328	Needle set (1 x set Beryllium Copper)
33	620.2003	Front Tube Insert		413.3128	Needle 4mm Flat Tipped
34	622.2030	Front Tube	32	712.3003	Front Spring
35	809.3005	Cylinder Stem Reaction Ring	33	620.3003	Front Tube Insert
36	610.2003	Anvil	34	622.3030	Front Tube
37	419.2003	Chisel Holder	35	729.3003	Cylinder Stem Reaction Ring
			36	610.3003	Anvil
			37	419.3003	Chisel Holder
	446.2003	Service Kit, (2, 5,13,14, 17, 18,19,28,29,30,31set & 32)		446.3003	Service kit, (2,5,13,14, 17, 18,19,28,29,30,31set & 32)